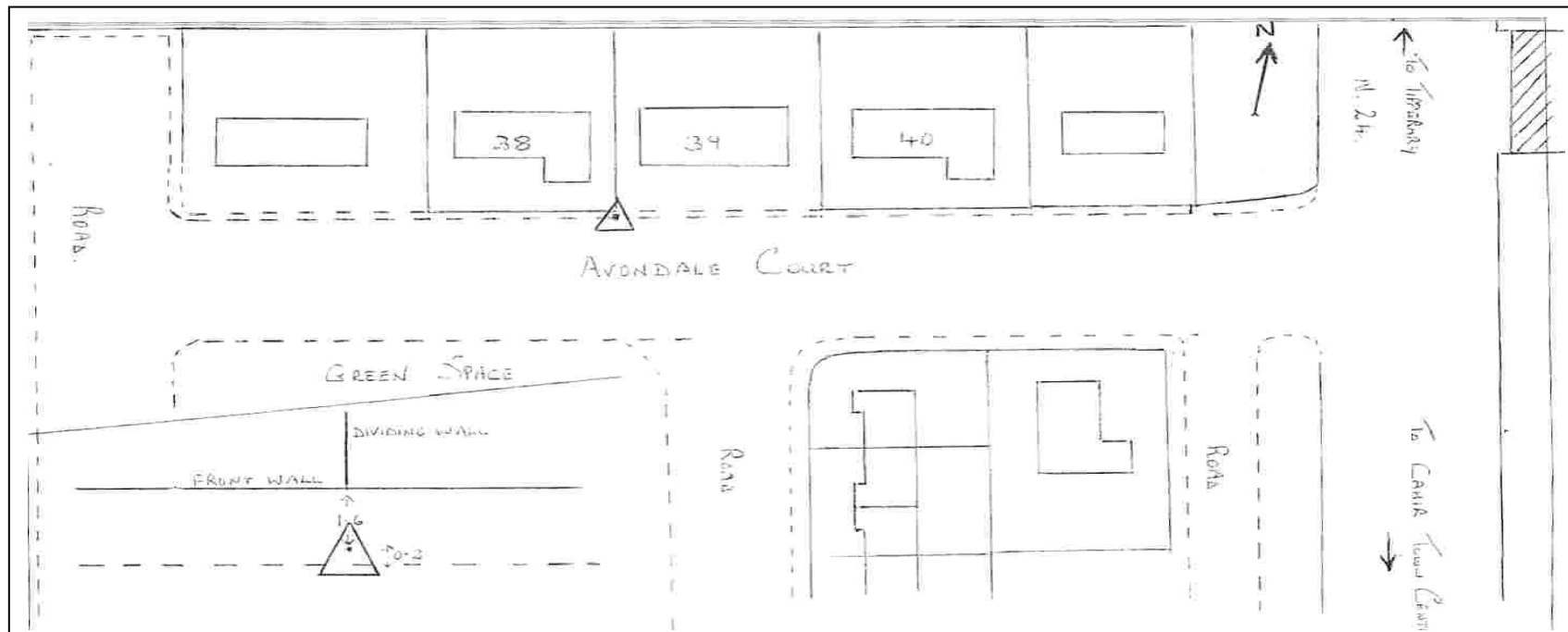


## IRENET CONTROL STATION D 122 CAHIR



### **IRENET-95 COORDS. (ETRF89)**

LAT            52° 22' 58.85590  
 LONG.         07° 55' 59.13030  
 ELLIP. HT.    109.0229

### **ITM COORDINATES**

Easting:       604554.985  
 Northing:      625720.687  
 Ht. (MSL mts)

### **IRISH GRID COORDINATES**

Easting:       204605.420  
 Northing:      125670.370  
 Ht. (MSL mts) 52.264 (Sp. Level)

### **WRITTEN DESCRIPTION**

This station consists of a brass rivet at Avondale Court Housing Estate in Cahir. From Cahir proceed along N24 towards Tipperary for 0.4miles. Turn left into Avondale Court and proceed to the dividing wall between numbers 38 and 39 on the right hand side. On the straight of the dividing wall 1.6m from corner or 0.2m from kerb.

**Note:** All measurements shown are in metres. Sketch is not to scale.

**GEODETIC SURVEYOR :**

**DATE:**